

A stylized, colorful illustration of a landscape. The foreground features rolling green hills with a brown path. On the left, there is a green tree, a purple flower, and an orange flower. A red bird is flying in the sky above the tree. The background consists of layered blue and white wavy bands representing a sky or water.

# *eFax Service Overview*

*Office of Information Technology*

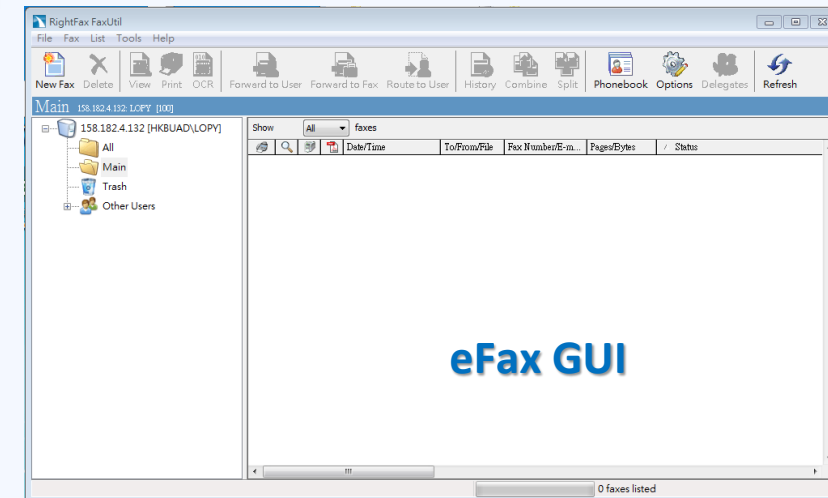
# *eFax Background*

- *Green service for campus*
- *Fax anywhere & anytime – Where is the Fax machine?*
- *Sending Bulk Fax*
- *Reduces costs:*
  - *No fax machine needed, or can be reduced*
  - *Reduces the maintenance costs on physical machine*
  - *Saves paper, toner, analog line and room space*
- *Flexibility – Hybrid integration*
  - *Coexists your Fax machine (outbound), and eFax (inbound)*

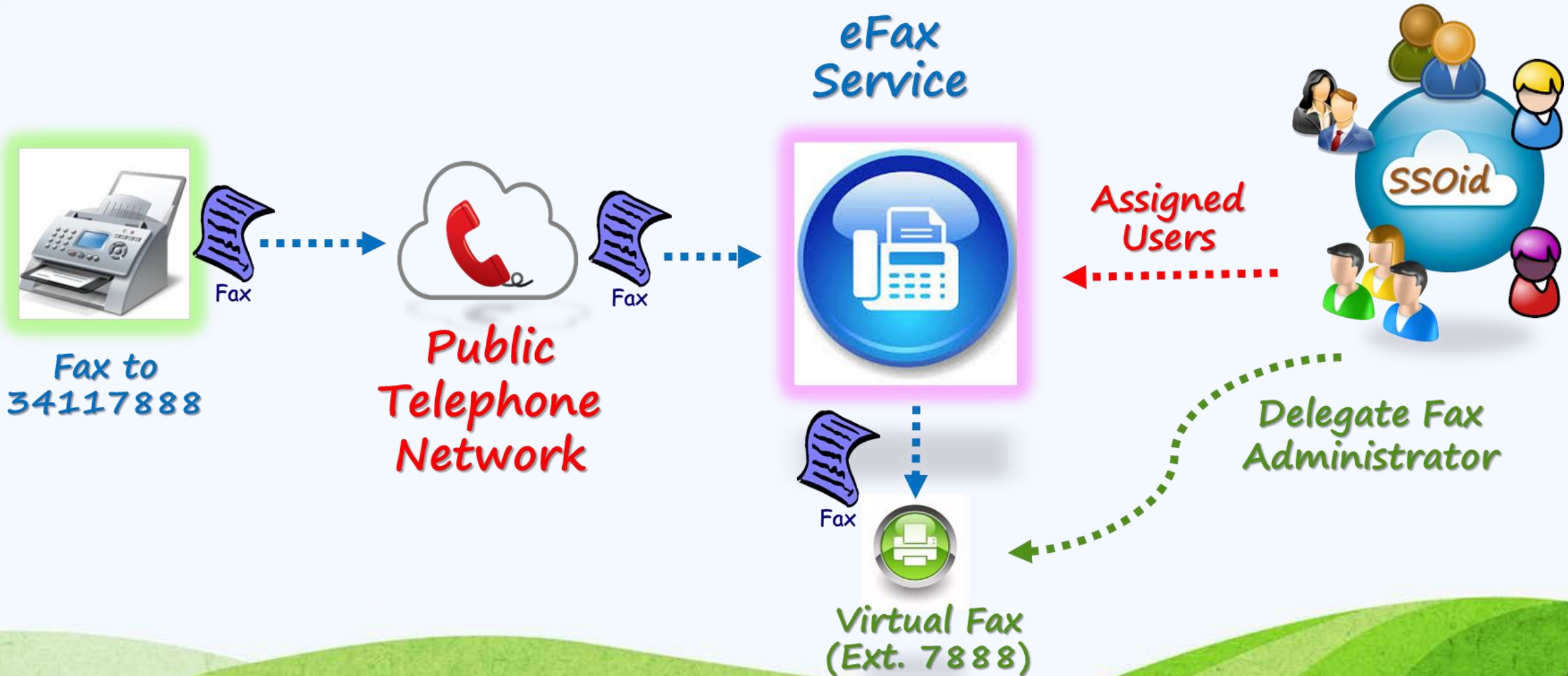
# Sending Fax for individual Staff



Calling Number displayed: 34117400



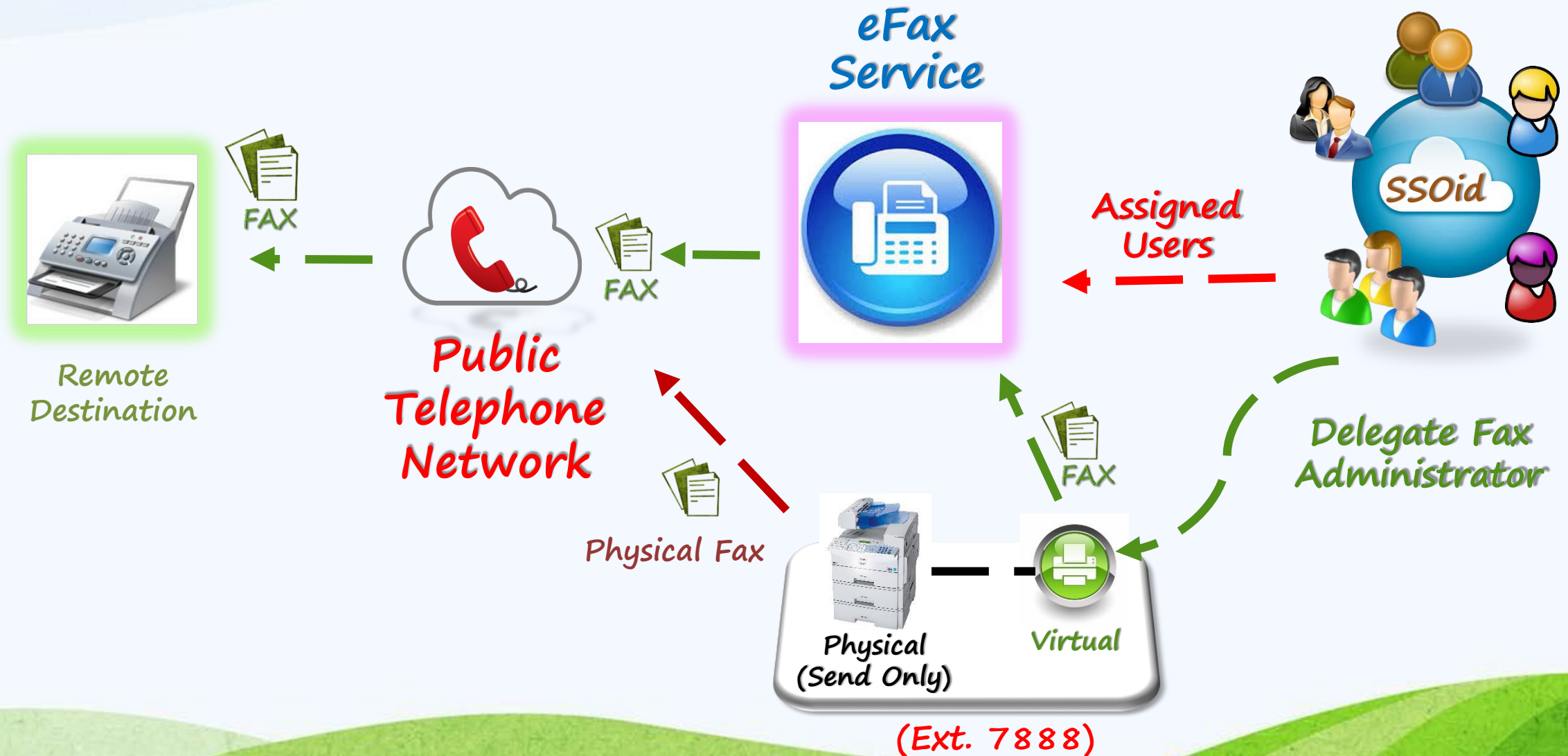
# Departmental Incoming Fax over existing numbers



# Hybrid Integration – Incoming Fax



# Hybrid Integration – Sending Fax



# Separation of Ownership

User Action	Individual User	Departmental Extension	Departmental Extension with IDD
Send Fax	Yes	Yes (Designed user)	Yes (Designed user)
Receive Fax	No	Yes	Yes (Departmental Extension)
Fax accessibility (Read only or delete)	Full Permission	Yes (Designed user with permission control)	Yes (Departmental Extension)

# Reference materials

- *User Guide for individual fax*
  - [eFAX Quick User Guide.pdf](#)





*Thank You!*