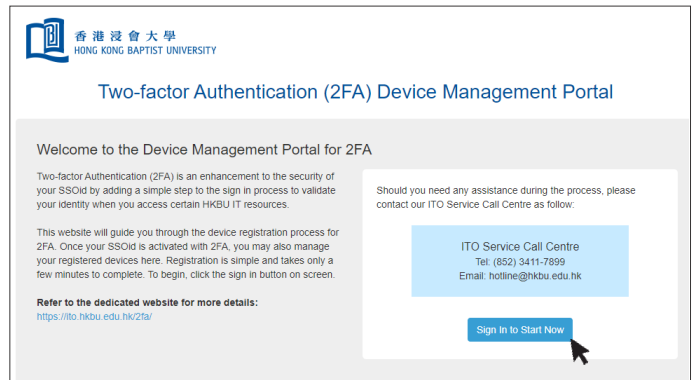
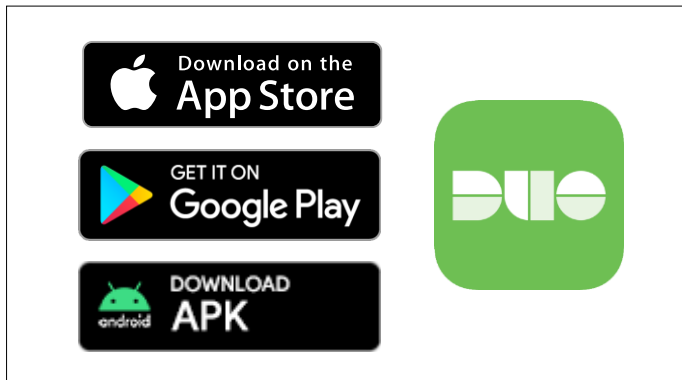


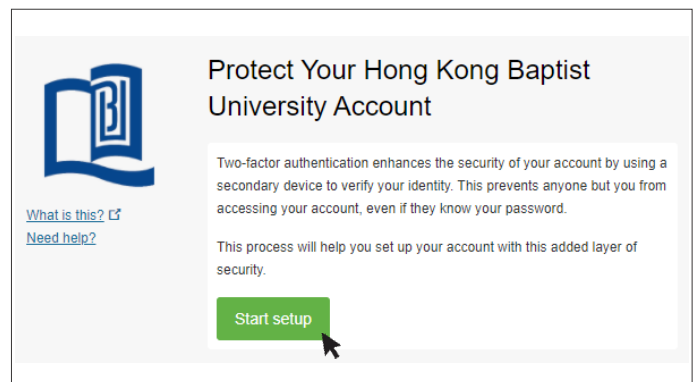
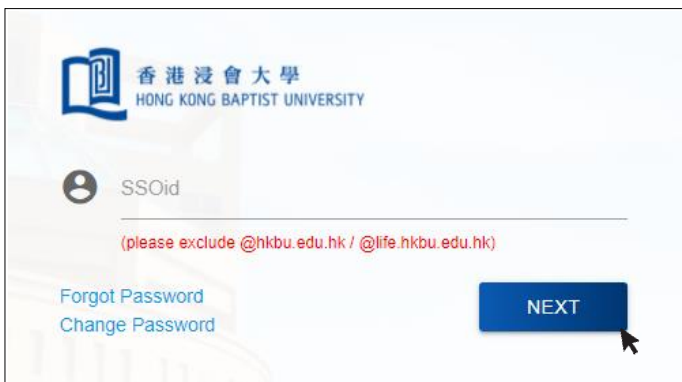
Register Your First 2FA Device using PC and Smartphone

(Only using smartphone that you can click [here](#)).



1 Search and install 'Duo Mobile' on **your smartphone** from App Store, Google Play or download the APK [here](#) directly for Android device.

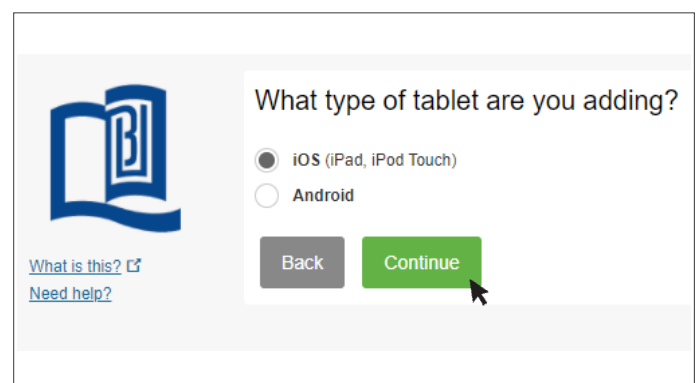
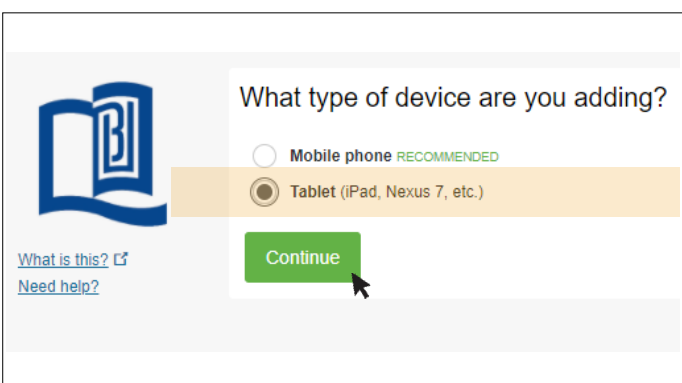
2 Go to **Device Management Portal** (<https://iss.hkbu.edu.hk/buam/DuoReg>) and click 'Sign In to Start Now'.



3 Enter your 'SSOid' and password (on NEXT page). If you're using non-HKBU networks, you need to answer Security Question after that.

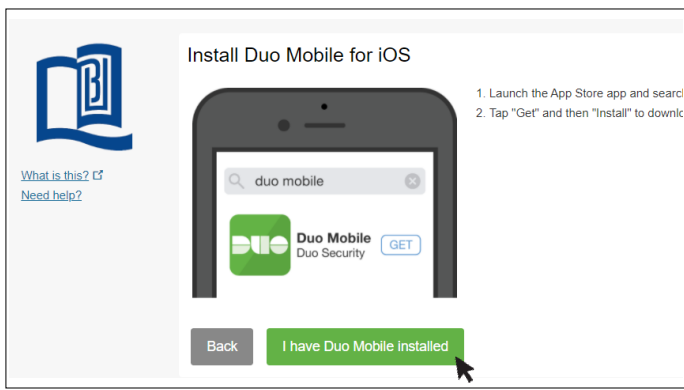
4 Upon successful verification, click 'Start setup'.

Tips: 'SSOid' is staff username/student number (not mail address)

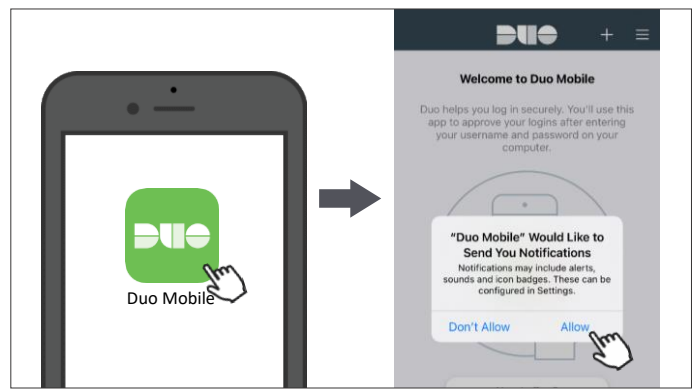


5 Select 'Tablet' (even if you're using a smartphone) and click 'Continue'.

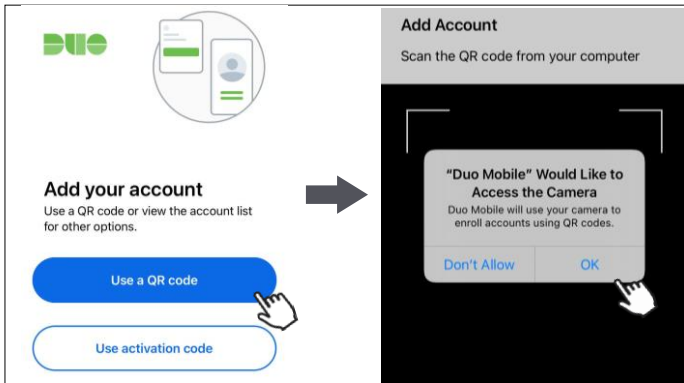
6 Select OS type of your smartphone and click 'Continue'.
Tips: Select iOS on the Apple device or Android on another supported device.



7 A Duo Mobile activation QR code will display on your PC's screen after click 'I have Duo Mobile installed'.



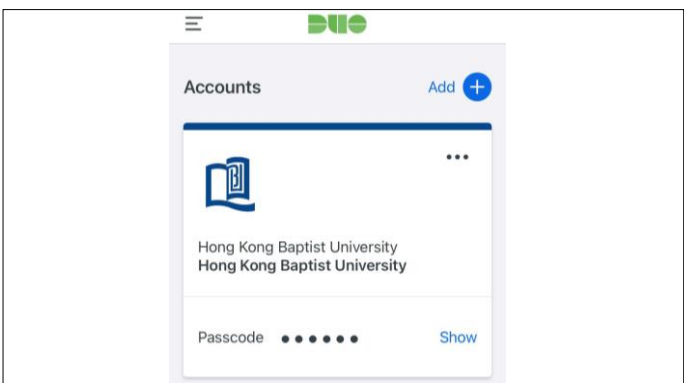
8 Click the Duo Mobile app on your smartphone. Click 'Allow' to receive the push messages from it in future.



9 Click 'Use a QR code' to add new account on the app. Click 'OK' to let it able to scan QR code.



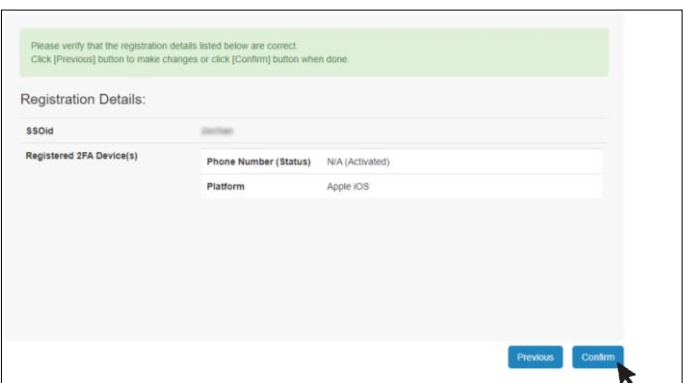
10 Scan the QR code on your PC's screen using your smartphone.



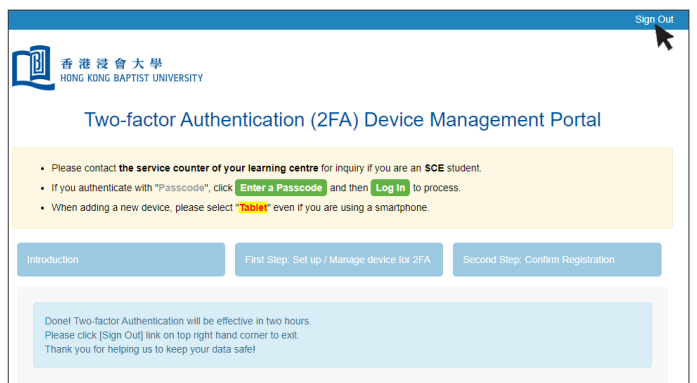
11 The new account will add to the app. Tips: **Keep** it on your smartphone for future logins.



12 Click 'Next' on your PC's screen.



13 You will see the list of your registered 2FA device(s) and click 'Confirm'.



14 Click 'Sign Out' on the top right to complete the registration. Refer to **ITO 2FA webpage** for more details.