

STUDENT

INTAKE 收生人數

		2002-2003	2003-2004
University-based Total	大學本部總數	2,056	2,372
By Faculty/School 按院劃分			
Arts Faculty	文學院	280	320
Business School	工商管理學院	517	532
Chinese Medicine School	中醫藥學院	51	56
Communication School	傳理學院	191	188
Science Faculty	理學院	373	391
Social Sciences Faculty	社會科學院	644	885
By Level of Study 按程度劃分			
Ph.D.	哲學博士	19	26
M.Phil.	哲學碩士	35	40
Taught Postgraduate	高等學位修讀課程	624	799
Undergraduate	本科課程	1,378	1,507

ENROLMENT 學生人數

		2002-2003	2003-2004
University-based Total	大學本部總數	5,528	5,982
By Faculty/School 按院劃分			
Arts Faculty	文學院	831	889
Business School	工商管理學院	1,294	1,354
Chinese Medicine School	中醫藥學院	205	228
Communication School	傳理學院	535	556
Science Faculty	理學院	1,030	1,122
Social Sciences Faculty	社會科學院	1,633	1,833
By Level of Study 按程度劃分			
Ph.D.	哲學博士	99	124
M.Phil.	哲學碩士	118	122
Taught Postgraduate	高等學位修讀課程	1,039	1,225
Undergraduate	本科課程	4,272	4,511
School of Continuing Education-based Total	持續教育學院總數	50,445	45,181
Full-time Programmes	全日制課程	1,824	1,851
Part-time Degree Courses	兼讀學位課程	7,604	6,138
Part-time Short Courses	兼讀短期課程	41,017	37,192

GENDER DISTRIBUTION 男女生比例

		Male 男	Female 女
University-based	大學本部	1	1.5
By Faculty/School 按院劃分			
Arts Faculty	文學院	1	3.2
Business School	工商管理學院	1	1.6
Chinese Medicine School	中醫藥學院	1	1.1
Communication School	傳理學院	1	3.5
Science Faculty	理學院	1.8	1
Social Sciences Faculty	社會科學院	1	1.7
By Level of Study 按程度劃分			
Ph.D.	哲學博士	1.9	1
M.Phil.	哲學碩士	1	1
Taught Postgraduate	高等學位修讀課程	1	1.3
Undergraduate	本科課程	1	1.7

Notes 備註:
 Student intake figures exclude those of the School of Continuing Education 收生人數不包括持續教育學院的學生
 Ug and Tpg numbers are as at 31 December, and Rpg numbers, as at 15 January 本科生及高等學位修讀生人數以該學年度十二月三十一日為準, 研究生人數則以該學年度一月十五日為準
 Enrolment figures for Full-time Programmes and Part-time Short Courses offered by the School of Continuing Education are the year's total enrolment 持續教育學院的全日制課程及兼讀短期課程的學生人數乃全年總數
 Gender distribution figures exclude students of the School of Continuing Education 男女生比例並不包括持續教育學院學生

FACTS AND FIGURES 資料及統計數字 2003 - 04

All figures for student and staff are in headcount 所有學生與職員的數字是以人數計

GRADUATES

GRADUATE NUMBER 畢業生人數

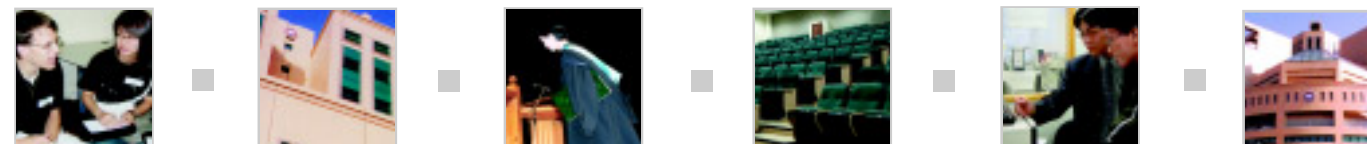
		2002-2003	2003-2004
University-based Total	大學本部總數	1,894	2,099
By Faculty/School 按院劃分			
Arts Faculty	文學院	246	270
Business School	工商管理學院	508	494
Chinese Medicine School	中醫藥學院	31	35
Communication School	傳理學院	170	183
Science Faculty	理學院	296	359
Social Sciences Faculty	社會科學院	643	758
By Level of Study 按程度劃分			
Ph.D.	哲學博士	12	23
M.Phil.	哲學碩士	27	39
Taught Postgraduate	高等學位修讀課程	632	679
Undergraduate	本科課程	1,223	1,358

		2002-2003	2003-2004
School of Continuing Education-based Total	持續教育學院總數	891	906
Bachelor of Education	教育學士學位課程	429	446
Associate Degree	副學士學位課程	462	460

EMPLOYMENT STATISTICS 就業統計

		Number 畢業生人數	Percentage 百分比
Total Respondents	回應問卷人數	1,196	100.0%
Employment Status 就業情況			
Employed Full-time	全職就業	949	79.3%
Further Studies	進修	144	12.0%
Employed Part-time	兼職	43	3.6%
Temporarily Employed	臨時就業	20	1.7%
Not Yet Employed	待業	15	1.3%
Self-employed	自我僱用	12	1.0%
Not Seeking Employment	暫停工作	9	0.8%
Emigrated	移民	4	0.3%
Employment Sector 就職行業			
Commerce/Industry	工商界	707	75.3%
Education	教育	94	10.0%
Community/Social Services	社會服務	113	12.0%
Government	政府機構	25	2.7%

Notes 備註:
 Graduate figures are as of September 2004 畢業生人數以二零零四年九月為準
 Graduate figures of the School of Continuing Education include only those from the Bachelor of Education (Hons) and Associate Degree Programmes 持續教育學院之畢業生人數只包括教育學士(榮譽)學位及副學士學位課程畢業生
 Employment statistics are from the Employment Survey conducted by the Office of Student Affairs on 2003 full-time first-degree graduates only 就業統計數據源自學生事務處二零零三年全日制本科畢業生就業情況調查



STAFF

TEACHING STAFF STRENGTH 教學人員人數

		Full-time 全職	Part-time 兼職
University Total	大學總數	481	1,024
Arts Faculty	文學院	95	16
Business School	工商管理學院	59	2
Chinese Medicine School	中醫藥學院	42	31
Communication School	傳理學院	36	5
Science Faculty	理學院	69	4
Social Sciences Faculty	社會科學院	103	35
Continuing Education School	持續教育學院	75	916
Academic Support Units	輔助教學部門	2	15
By Category 按類別劃分			
Academic Staff	教學人員	316	57
Teaching Support Staff	輔助教學人員	165	967

NON-TEACHING STAFF STRENGTH 非教學人員人數

		Full-time 全職	Part-time 兼職
University Total	大學總數	1,185	37
Academic Departments 教學部門			
Arts Faculty	文學院	49	3
Business School	工商管理學院	33	1
Chinese Medicine School	中醫藥學院	85	4
Communication School	傳理學院	29	1
Science Faculty	理學院	144	3
Social Sciences Faculty	社會科學院	111	16
Continuing Education School	持續教育學院	203	7
Academic Support Units 輔助教學部門			
		179	0
Administration Offices 行政部門			
		173	1
Others 其他			
		179	1
Academic Community Hall	大學會堂	11	0
Chaplain's Office	校牧處	9	1
Maintenance of Premises	樓宇維修	119	0
Student Facilities and Amenities	學生事務及康樂設施	40	0

Notes 備註:
 Academic Staff include faculty staff of rank from Chair Professor to Assistant Professor 教學人員包括由講座教授至助理教授級別的大學教師
 Teaching Support Staff are Instructors, Demonstrators or Teaching Assistants 教學輔助人員包括導師、助教或教學助理
 All staff figures are as at 31 December 教職員人數以該年度十二月三十一日為準

FINANCE AND OTHERS

INCOME AND EXPENDITURE 收入與支出

		2002-2003	2003-2004
(in HK\$'000 以千港幣計)			
TOTAL INCOME	總收入	1,457,963	1,797,300
Government Subventions	政府撥款	790,021	860,859
Tuition, Programmes and Other Fees	學費、課程及其他收費	513,802	507,738
Interest and Investment Income	利息及投資收入	41,720	144,626
Donations and Benefactions	捐款及慈善捐贈	45,651	204,885
Auxiliary Services	雜項服務	49,631	59,777
Other Income	其他收益	17,138	19,415
TOTAL EXPENDITURE	總支出	1,313,981	1,329,186
Learning and Research 教育及研究			
Instruction and Research	教學及研究	802,862	810,523
Library	圖書館	52,079	48,048
Central Computing Facilities	中央電腦設施	61,238	56,729
Other Academic Services	其他教學服務	31,358	27,509
Institutional Support 教學支援			
Management and General	管理及一般支出	135,319	128,842
Premises and Related Expenses	校舍及有關開支	152,539	173,011
Student and General Education Services	學生及一般教育服務	59,223	61,560
Other Activities	其他活動	19,363	22,964

RESEARCH FUNDING 研究資助

		2002-2003	2003-2004
(in HK\$'000 以千港幣計)			
University Total	大學總數	38,139	57,156
UGC Block Grant	政府(教資會)資助	6,591	9,843
Research Grants Council (RGC)	研究資助局撥款	21,079	32,611
Central Allocation	中央分配	0	7,600
Competitive Bids	遴選分配	14,729	17,963
Direct Allocation	既定分配	5,500	6,000
Others	其他	850	1,048
Other Funds	其他資助	10,469	14,702

RESEARCH ACTIVITIES 研究工作

		No. of Projects 研究項目
University Total	大學總數	579
By Faculty/School 按院劃分		
Arts Faculty	文學院	65
Business School	工商管理學院	42
Chinese Medicine School	中醫藥學院	79
Communication School	傳理學院	17
Science Faculty	理學院	243
Social Sciences Faculty	社會科學院	133

LIBRARY DATA 圖書館數據

		2003-2004
Number of Reader Seats	讀者座位	970
Number of Public Computer Workstations	電腦工作站	154
Library Collections 圖書館藏量		
Print Collections	總冊數	847,307
Active Periodical Titles	期刊	4,172
Media and Microforms	多媒體及微縮資料	108,439
Research-oriented Electronic Databases	電子數據庫	142
Electronic Journals	電子期刊	16,292

Notes 備註:
 Research Funding figures are for the year ending 30 June 研究資助數據為該年度七月一日至翌年六月三十日之總計
 Figures for 2003-04 are based on unaudited accounts 二零零三至零四財政年度賬目尚未核對