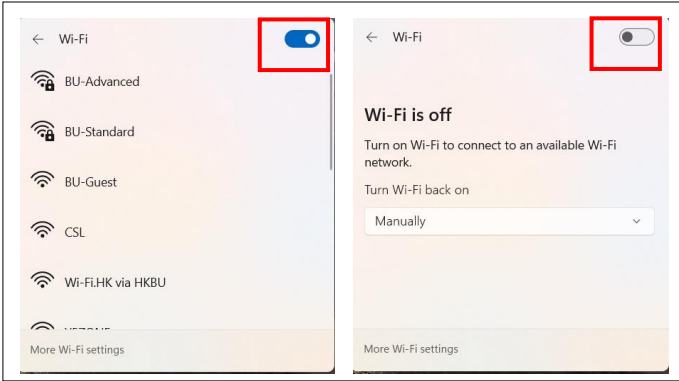
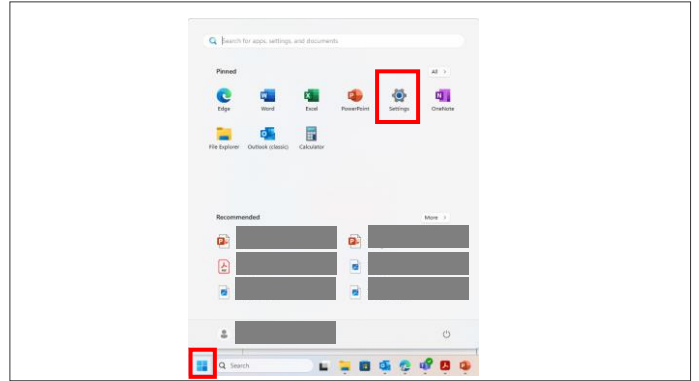


# Setup and Connect to Wired Network in Your Room at The Undergraduate Halls

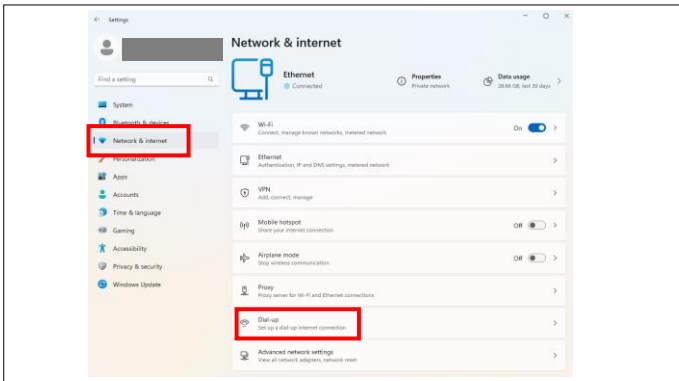
Note: This user guide has been prepared using Windows 11.



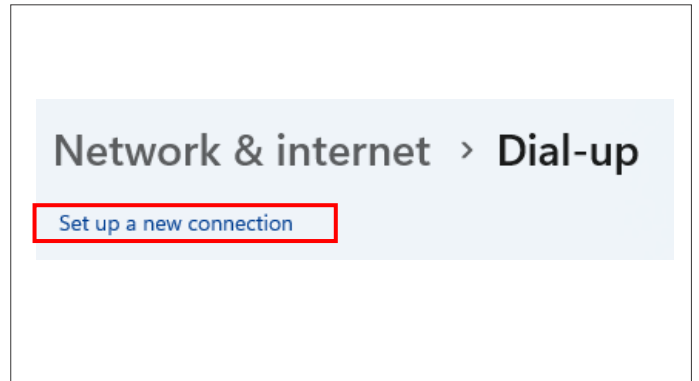
**1** Turn off the Wi-Fi on your device.



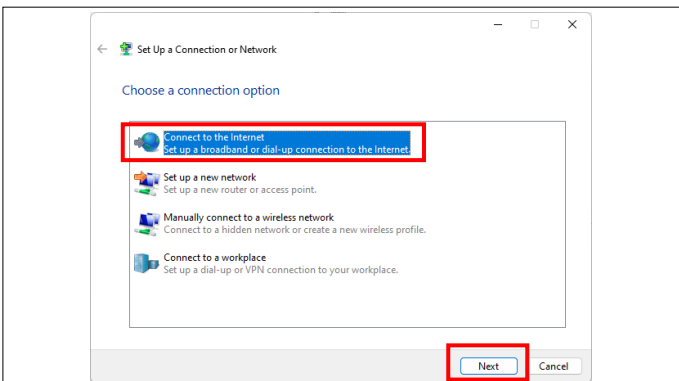
**2** Click 'Start' and select 'Settings'.



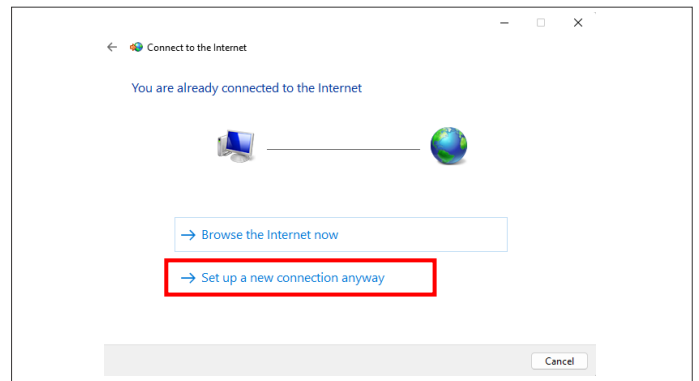
**3** Navigate to 'Network & Internet'. Scroll down and select 'Dial-up'.



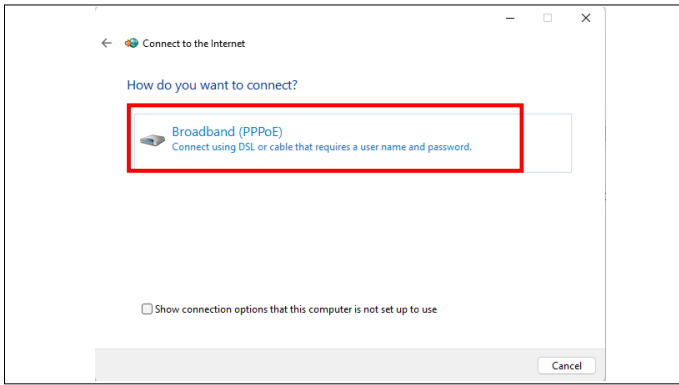
**4** A new screen will pop up. Select 'Set up a new connection'.



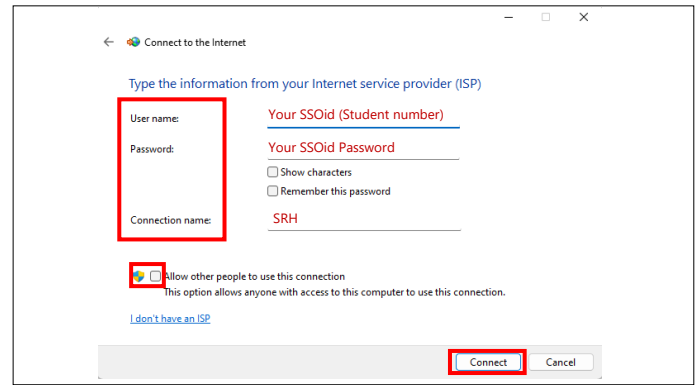
**5** In the next window, select 'Connect to the Internet' and click 'Next'.



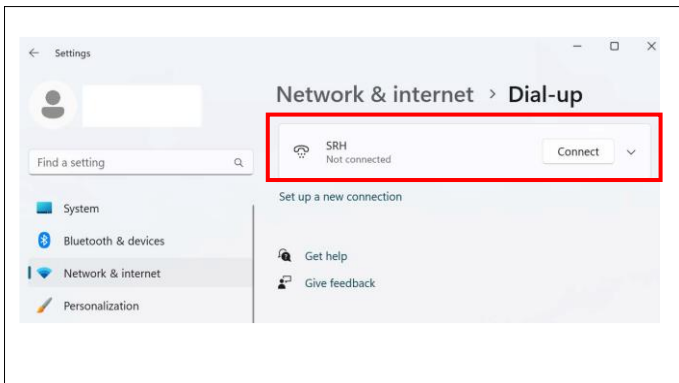
**6** When another window appears, select 'Set up a new connection anyway'.



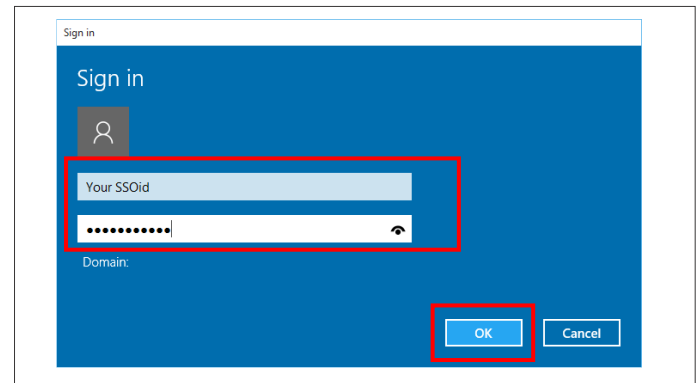
**7** In the following window, select '**Broadband (PPPoE)**'.



**8** Enter all required details, using your **SSOid**(student number) and **password** as the Username and Password. Type '**SRH**' as Connection name. Check the box '**Allow other people to use this connection**' and click '**Connect**'. The wired network is setup successfully.



**9** To connect to the wired network, follow Step 2 and 3. Find the available network named '**SRH**' and click '**Connect**' next to it.



**10** Enter your **SSOid** (student number) and **password**, then click '**OK**'. The wired network is connected successfully.