
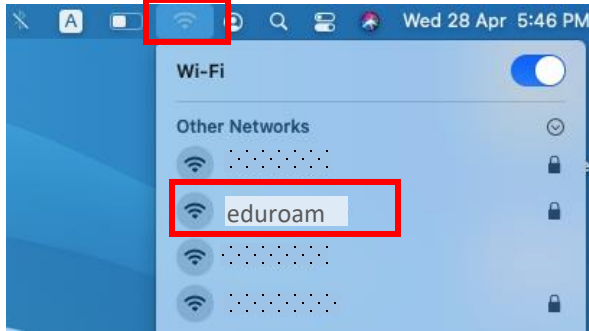
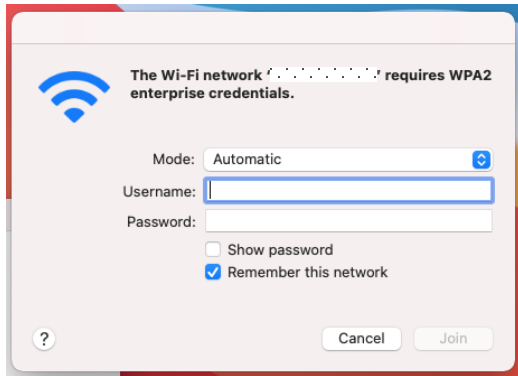


Steps to connect (Universities via CSL / Universities via Y5ZONE / eduroam)

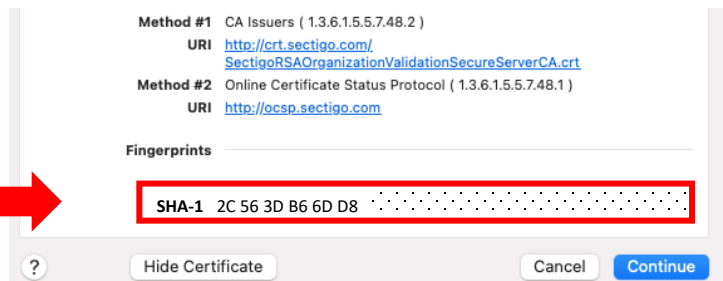
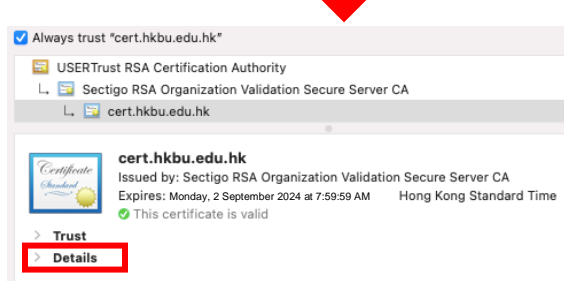
1. At the top right hand corner of the Apple desktop, click on the Wi-Fi icon , then select “Universities via CSL” or “Universities via Y5ZONE” or “eduroam”.



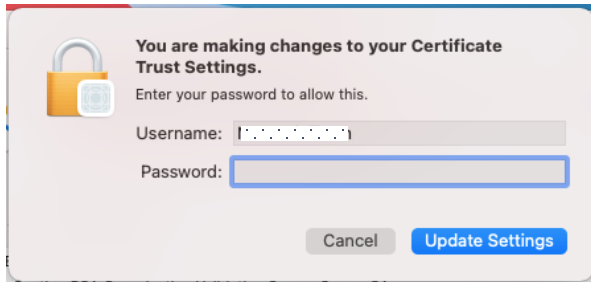
2. Input Username: ssoid@hkbu.edu.hk (e.g. 16101234@hkbu.edu.hk) and Password, then click “Join”.



3. ****Important**** - You must click “Show Certificate” > “Details” and scroll down to validate the Fingerprints (SHA-1) is exactly the same as shown (2C 56 3D B6 6D D8 ...), otherwise stop the connection and report to ITO hotline immediately.




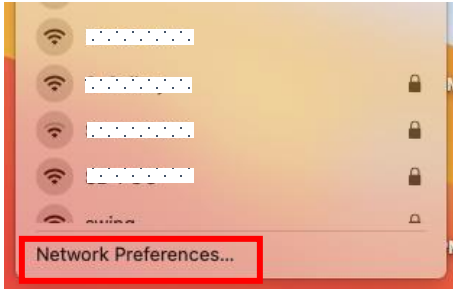
4. If the Fingerprints is matched, click “Connect”.
5. Input your system password, then click “Update Settings” to update the Certificate Trust Settings.

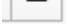


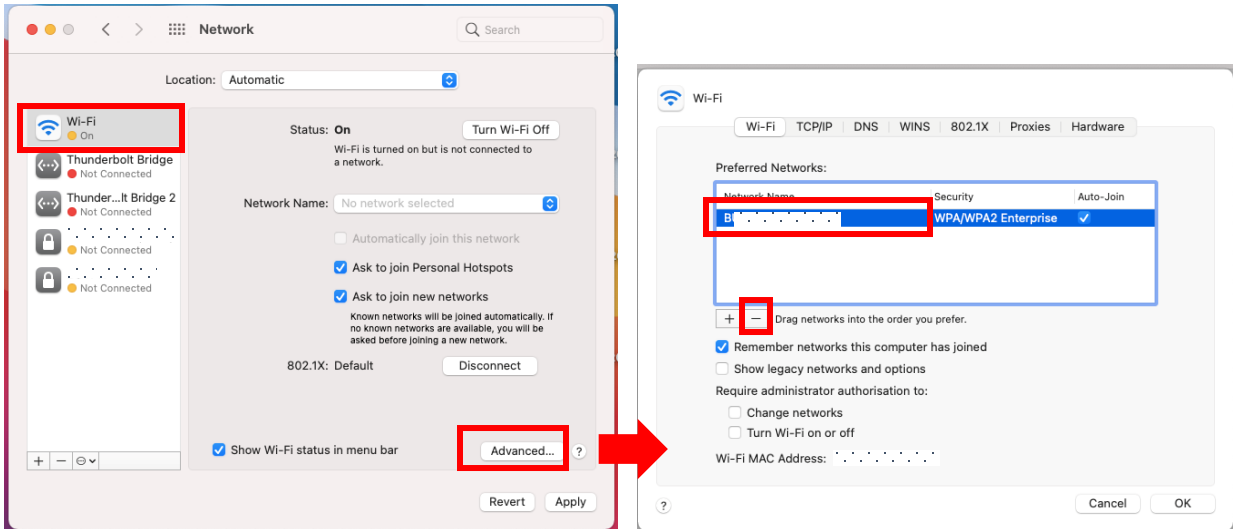
6. Done.

Steps to forget (Universities via CSL / Universities via Y5ZONE / eduroam)

1. At the top right hand corner of the Apple desktop, click on the Wi-Fi icon , then select “Network Preferences...”.



2. Click “Advanced...”, then select desired SSID and click  to remove.



3. Click “OK”, then “Apply”. Done.

For enquiries, please contact our Service Call Centre at **34117899**, or hotline@hkbu.edu.hk