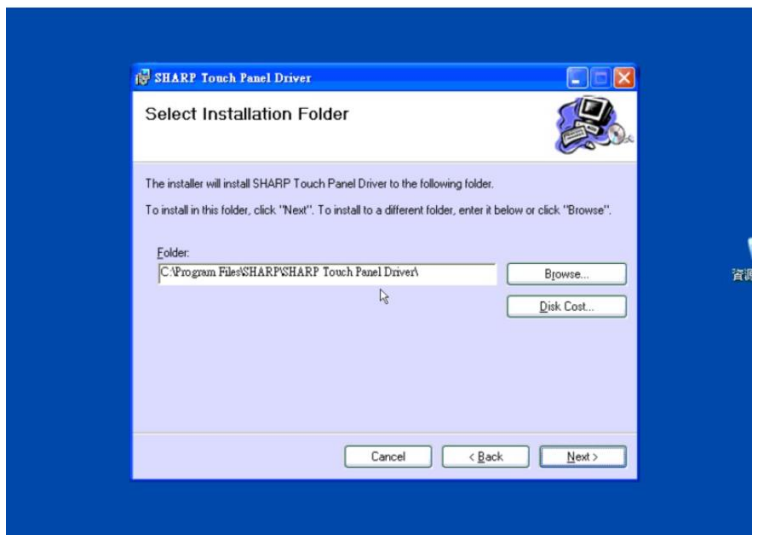


Installing device drivers for Sharp interactive whiteboard on Windows7 PC.

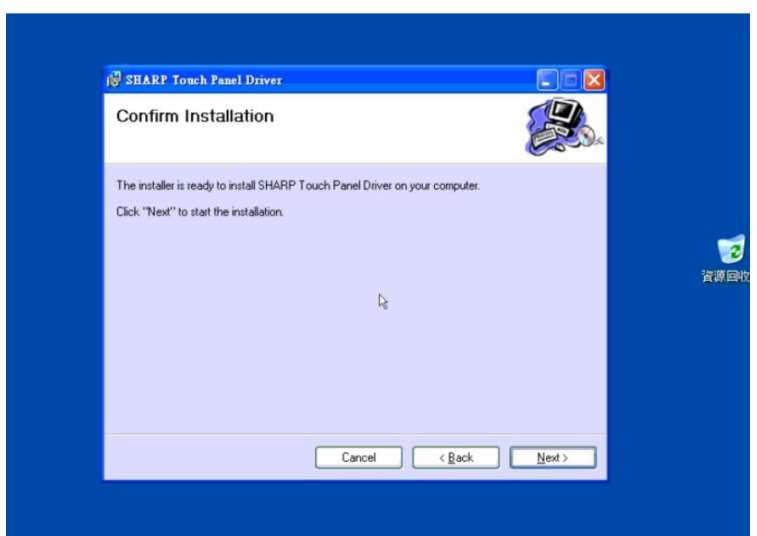
1. Download the file and double – click to open it. Click the button “Next (下一步)” on the welcoming page.



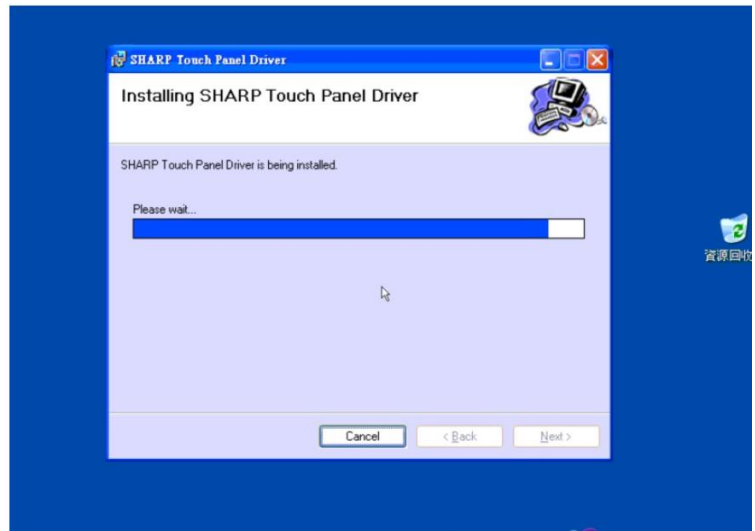
2. Modify the file path if you do not want to use the default settings. Then click “Next (下一步)”.



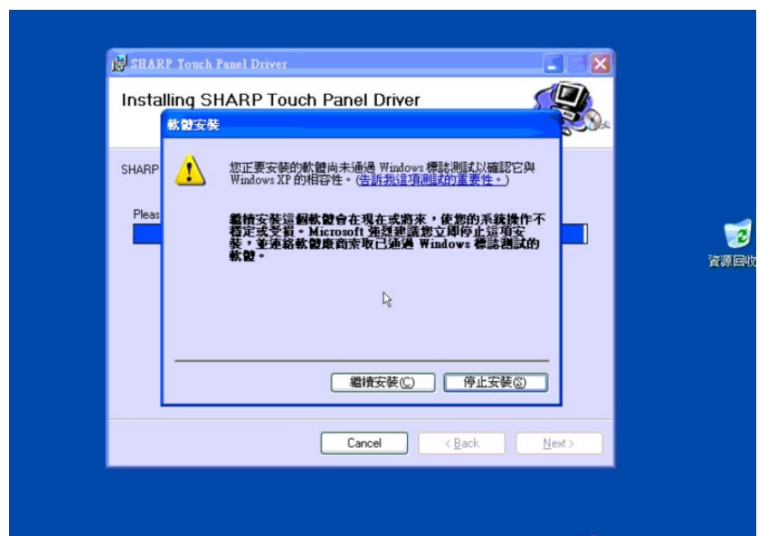
3. Click the button “Next (下一步)”.



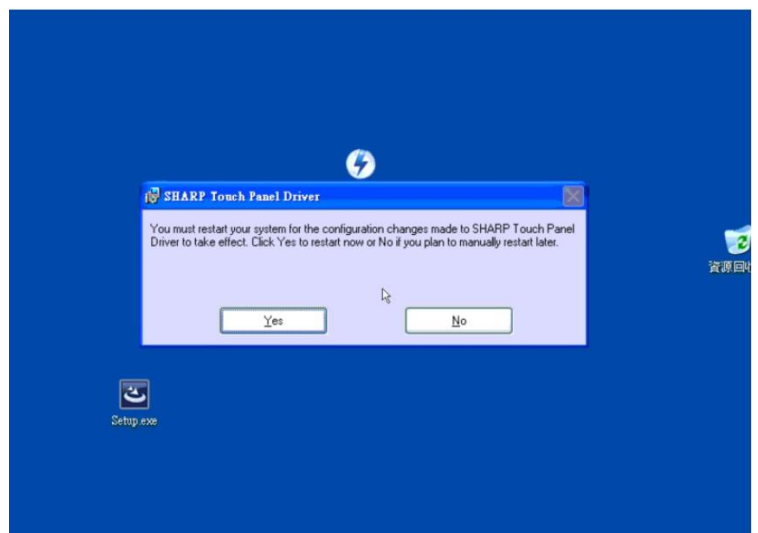
4. Installation is in progress.



5. Click “ Continue to install (繼續安裝).

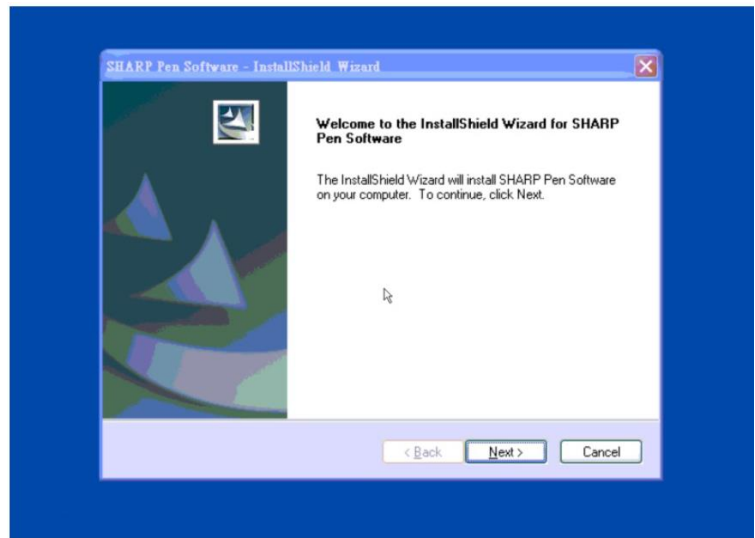


6. Restart your computer to complete the installation process by clicking the “Yes” Button.



Installing Sharp Pen software of the Sharp Interactive whiteboard on Windows 7 PC

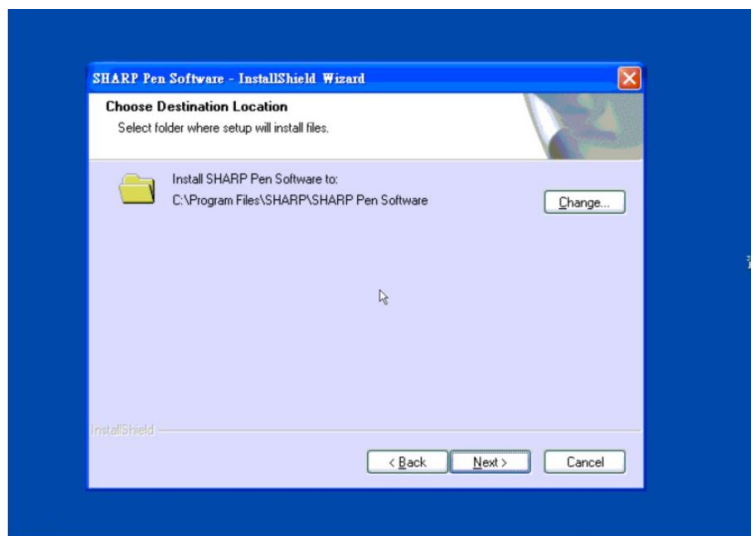
1. Download the file and double – click to open it. Click the button “Next (下 一 步)” on the welcoming page.



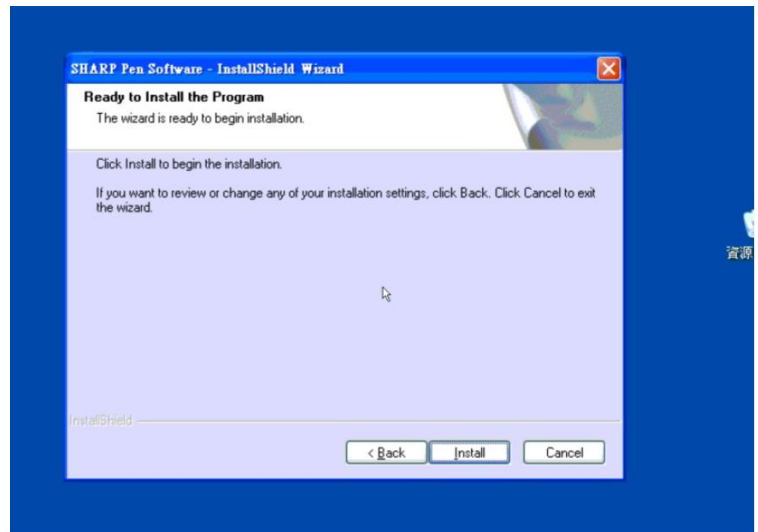
2. Read the license agreement, if you accept the terms and condition, click “I accept the terms of the license agreement” to continue the installation.



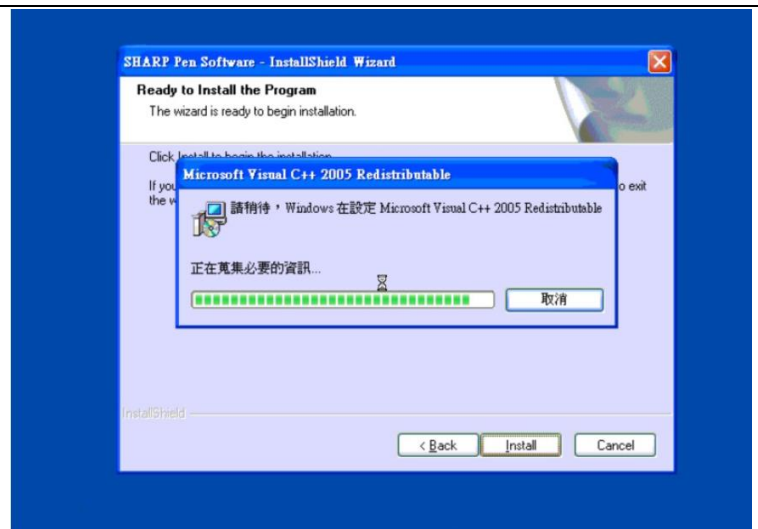
3. Modify the file path if you do not want to use the default settings. Then click “Next (下 一 步)”.



4. Click the button “Install”.



5. Installation is in progress.



6. Complete the installation process by clicking the “Finish (完成)” button.

