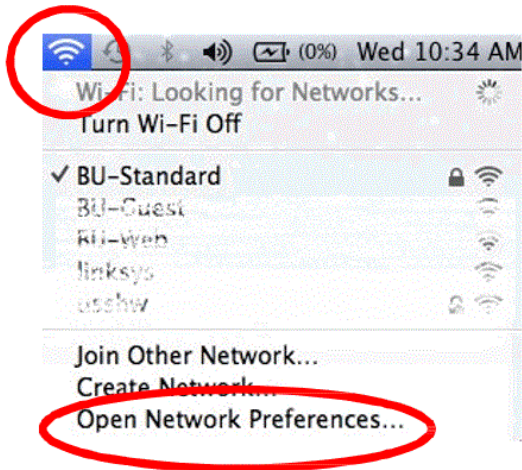


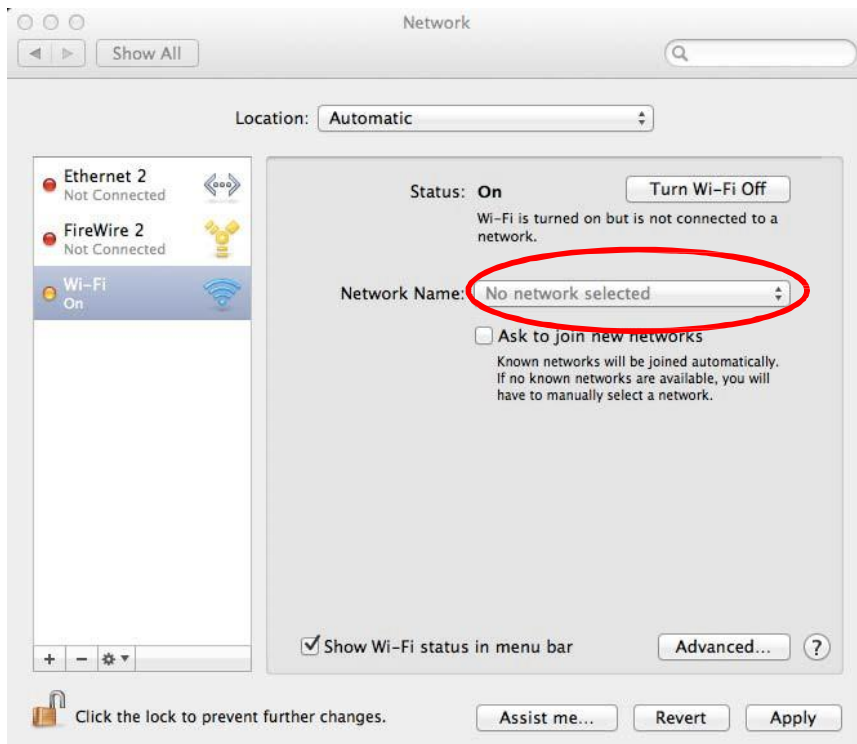
(This document is good for Mac OS 10.7 or later)

Find the Wi-Fi signal icon on the top right hand corner of the Apple desktop, and then click this icon to see the list of SSID detected including “BU-Standard”.

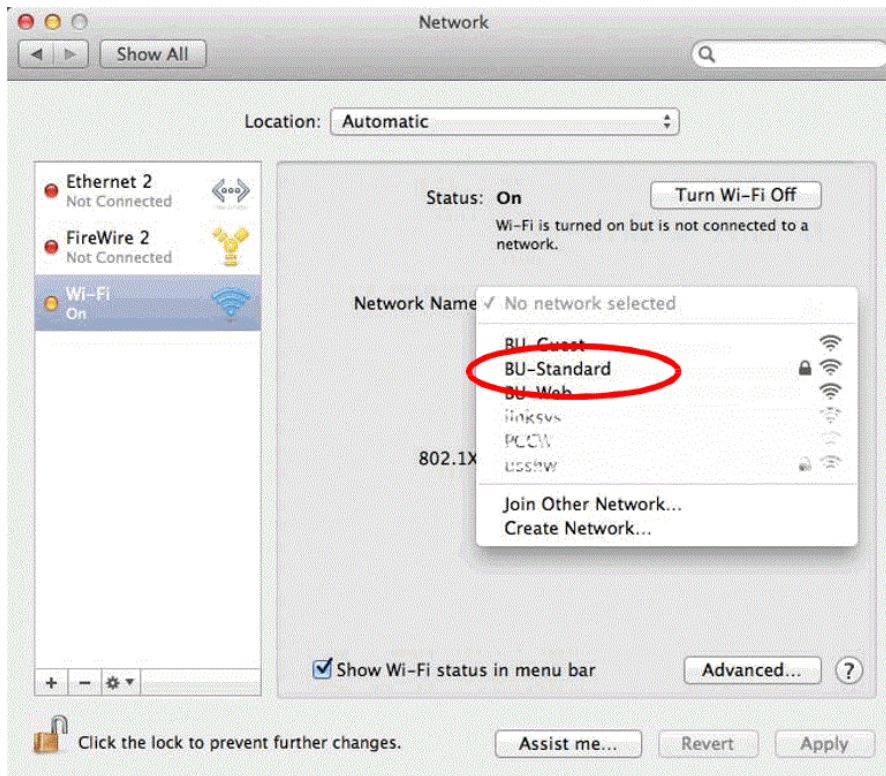


At the Wi-Fi signal icon, select “Open Network Preferences...”, the next screen is shown below. To set up Wi-Fi, do the following procedure:

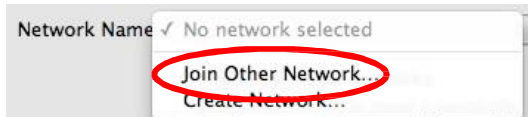
1) Click on the pull down menu next to “Network Name”.



Case 1.1: If there is SSID shown, select “BU-Standard” then move on to step 2.



Case 1.2: In case there is no SSID shown next to “Network Name”, click “Join Other Network...”



In the next screen, click “Show Networks” button to show other SSID.



When “BU-Standard” appears, highlight it then click “Join” button to proceed to step 2.

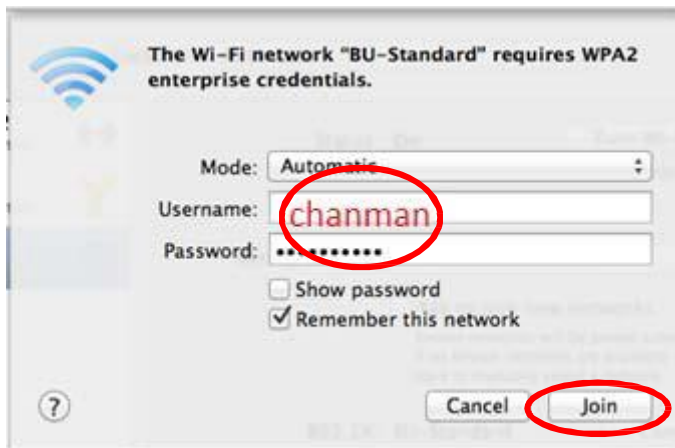


2) In the next screen, Username and Password is originally blank. Please fill in your **SSOid** and Password, as below. To finish, click the “Join” button.

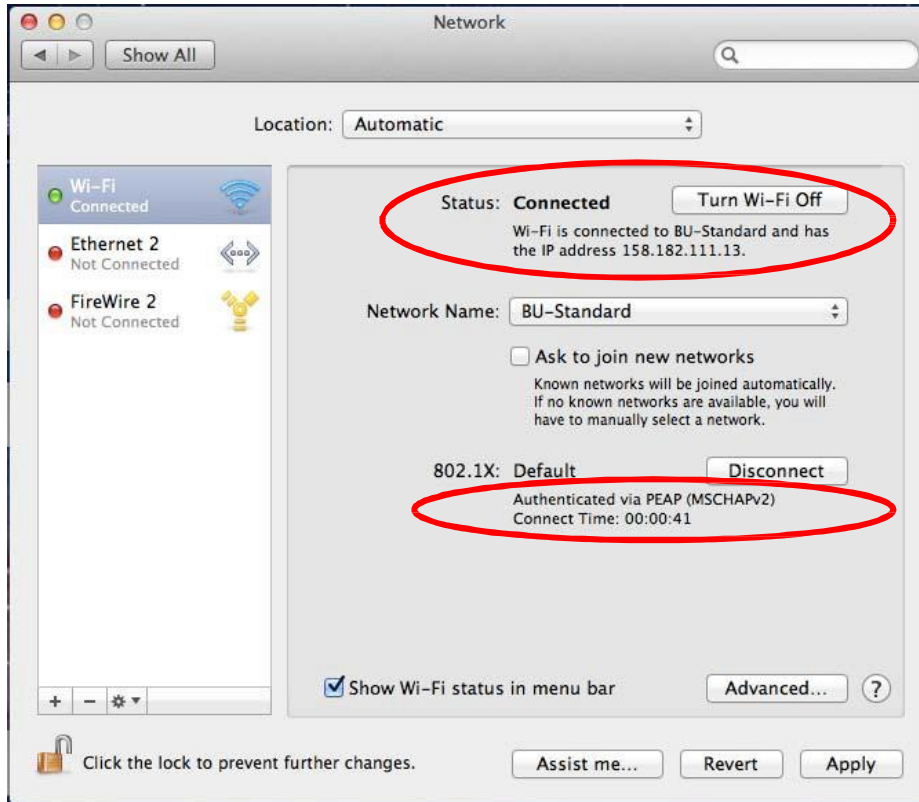
SSOid (Single-Sign-On Identity)

For student: his/her student number, e.g. 12000000

For Staff: his/her email-name, e.g. chanman for chanman@hkbu.edu.hk



3) After “Join” button is clicked, there is a word “Connecting...” on the bottom left corner. When connected, the screen will be displayed as below. When the “Wi-Fi” light is “green” and said “Connected”, and status in the RED circle shows that the Wi-Fi connection is made.



4) You may now open a browser (e.g. Safari) to browse the Internet.

For enquiry, please contact Service Call Centre at 34117899, or email hotline@hkbu.edu.hk.