
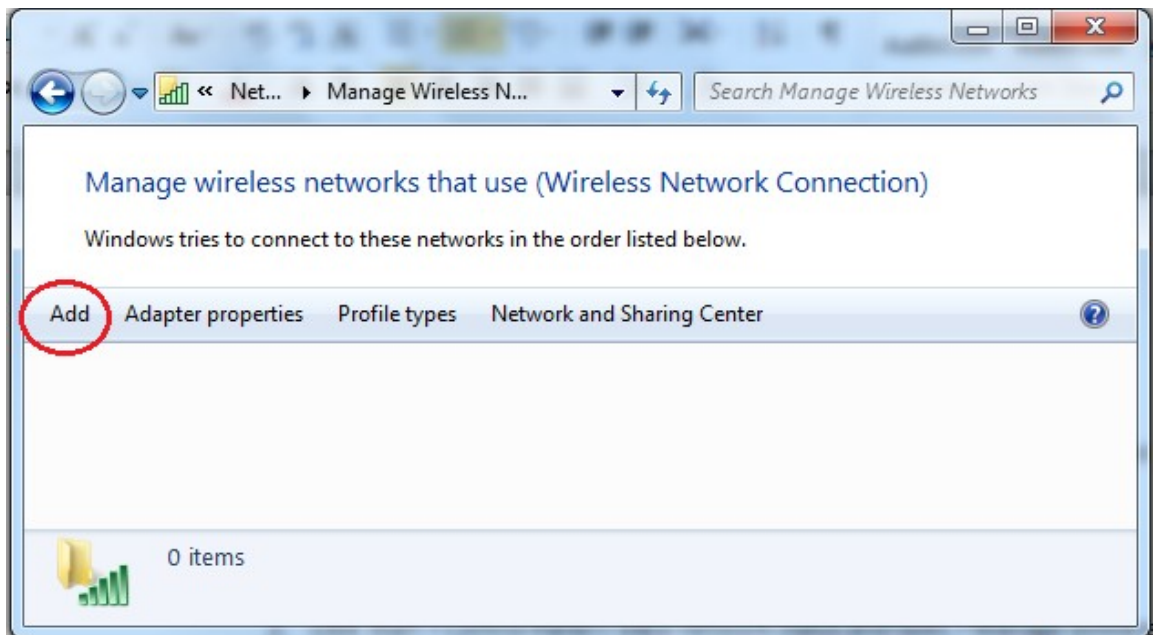


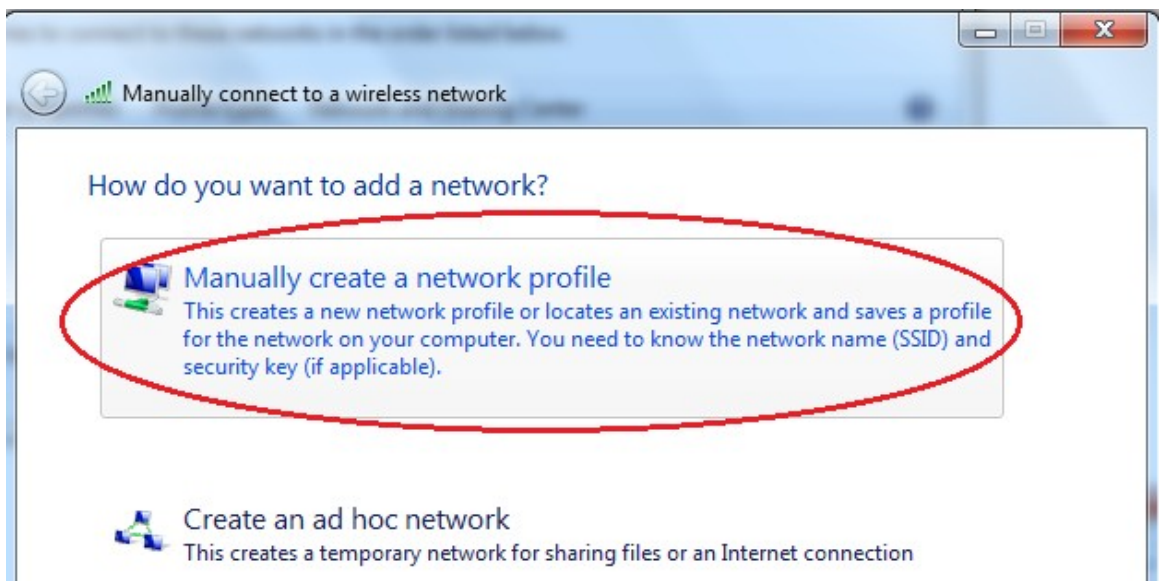
The BUSRH-Advanced service covers most area of the Hong Kong Baptist University Student Residence Halls. It is a secured connection by 802.1x authentication.

Setup Procedure (done once)

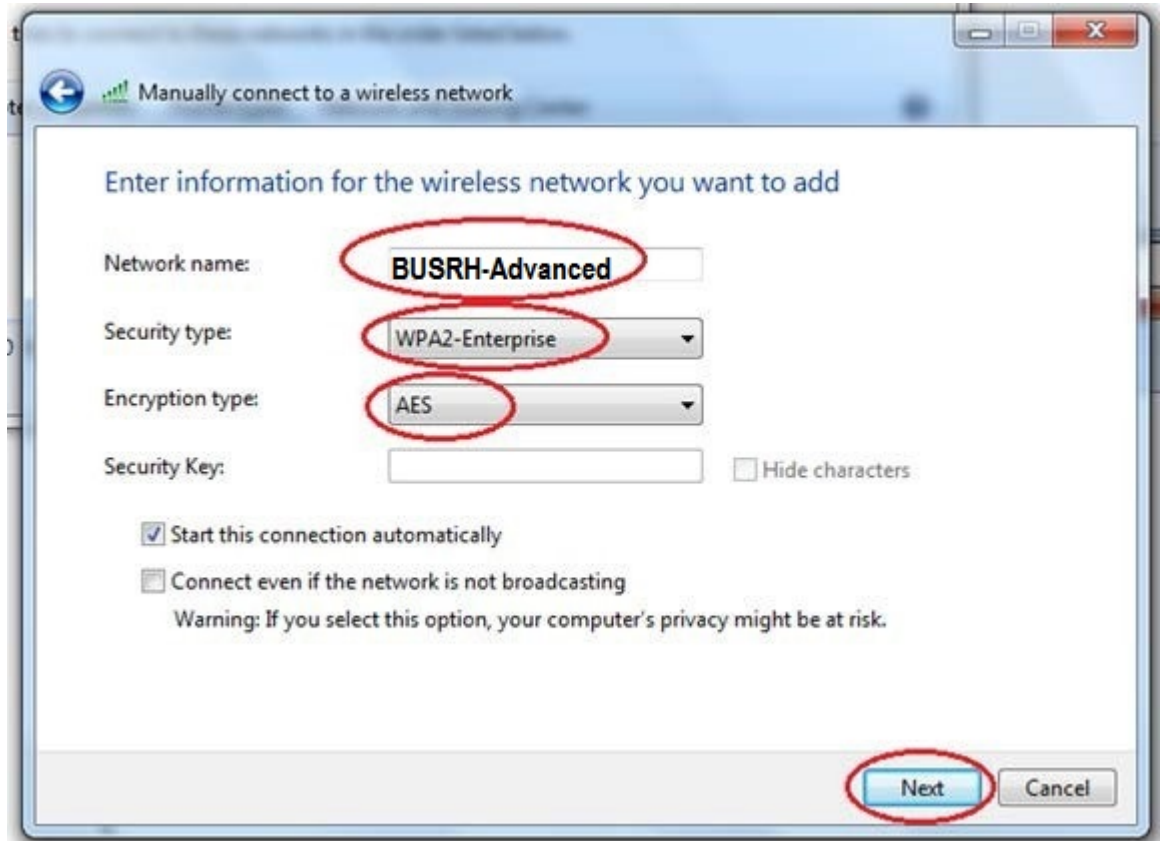
1. Install Wi-Fi digital certificate from https://ito.hkbu.edu.hk/pub/wifi_network/files/HKBU_CA.zip
2. Click  **Start > Control Panel > View network status and tasks > Manage wireless networks > Add**



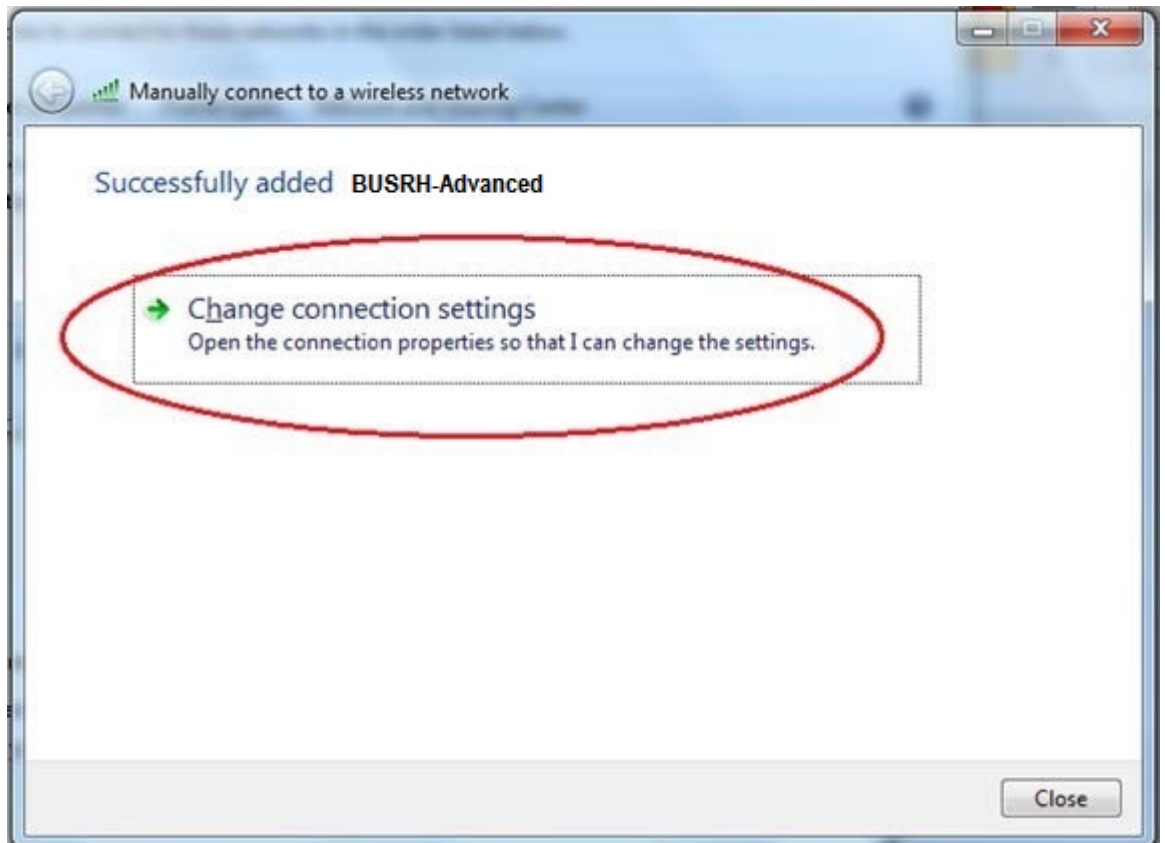
3. Click on **“Manually create a network profile”**



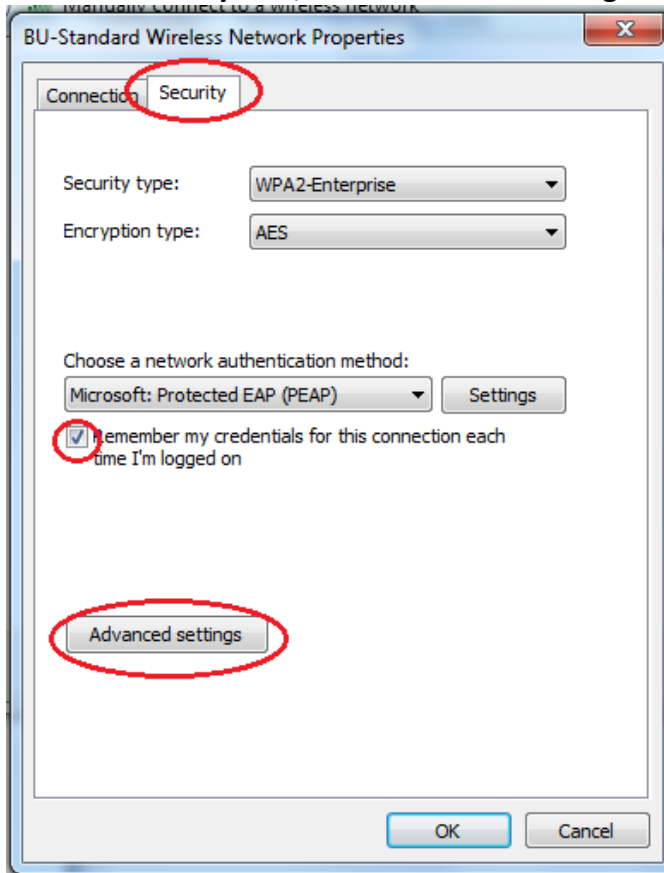
4. Setup as follow



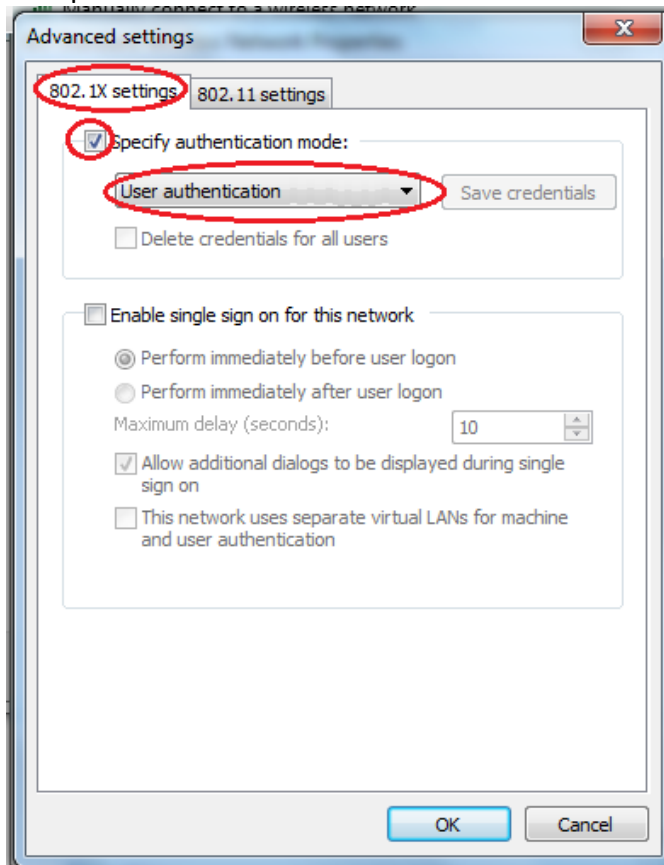
5. Click on "Change connection settings"



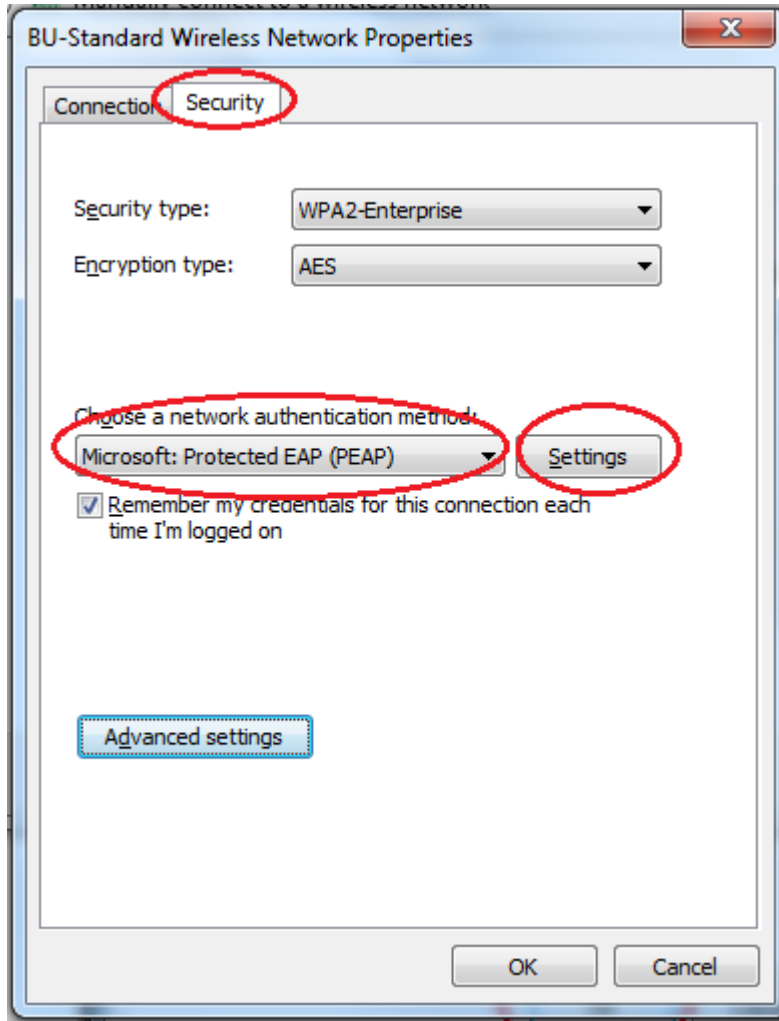
6. Click on **“Security”** tab, then **“Advanced settings”**



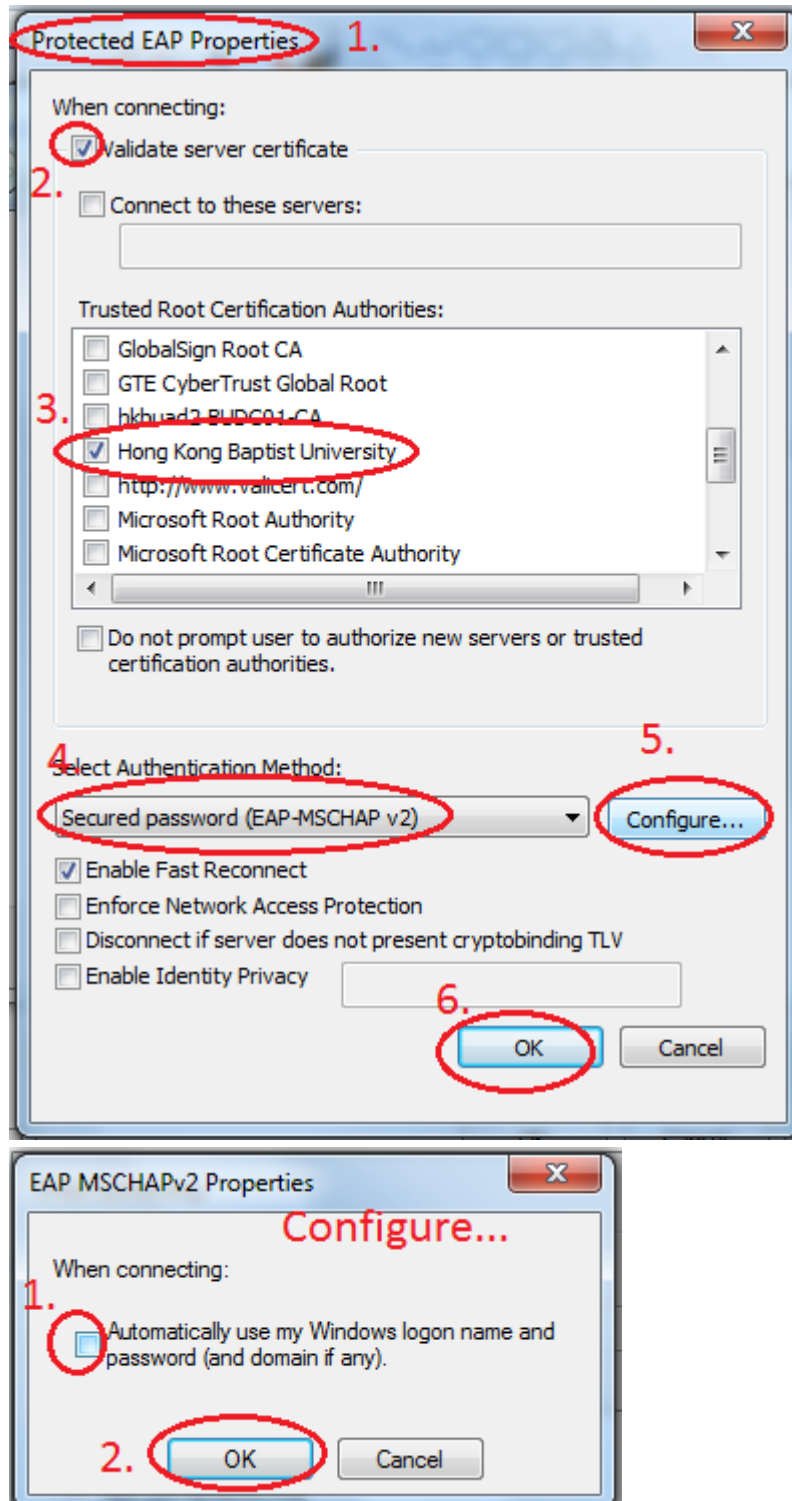
7. Set up as below



8. Select **“Microsoft: Protected EAP (PEAP)”** then click on **“Settings”**




9. Set up as below.



10. Click "OK" repeatedly to save the setting.

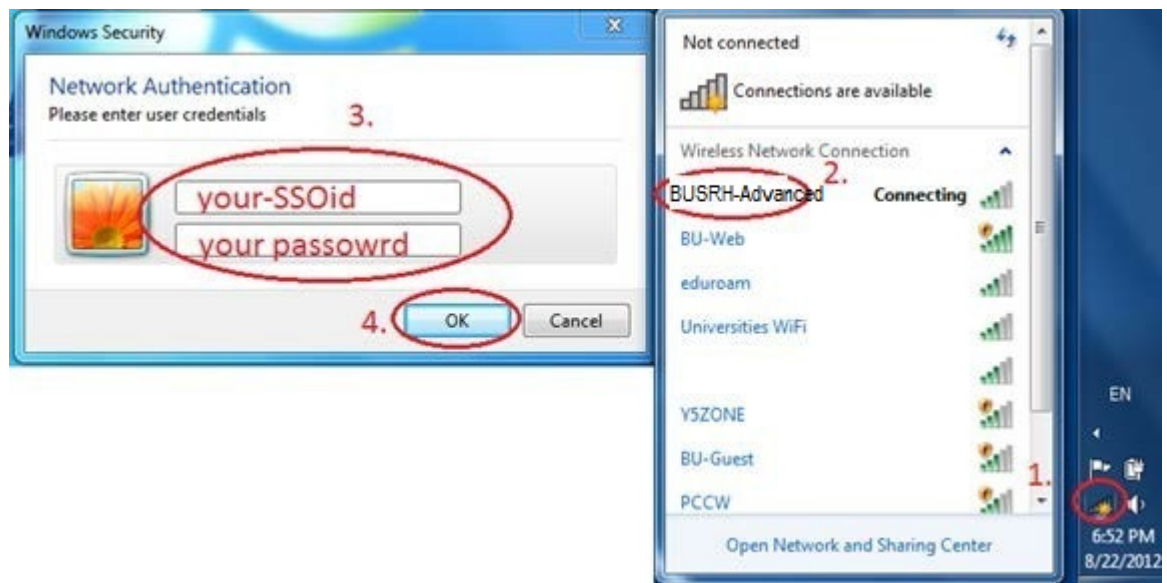
Connect the service

1. Click on wireless LAN icon .
2. Click on “BUSRH-Advanced”, at “Windows Security” window fill in **SSOid** and **password**, then click “OK”.

SSOid (Single-Sign-On Identity)

For student: his/her student number, e.g. 12000000

For Staff: his/her email-name, e.g. chanman for chanman@hkbu.edu.hk



3. As successful connect the wireless LAN icon change to .

For enquiry, please contact Service Call Centre at 34117899, or email hotline@hkbu.edu.hk.